

## NEW FROM FPD DEALERS

[FARRIERPRODUCTS.COM/LOCATIONS](http://FARRIERPRODUCTS.COM/LOCATIONS)

### Kerckhaert Kings ES Plus High Goal Polo Shoes

The new Kerckhaert Steel Kings ES Plus High Goal Polo shoes are now available to be ordered. The ES Plus High Goal Polo shoe retains all the popular features of the Kings Extra Sound Polo, including front and hind shape, toe clips, precise punching and nail fit. The new shoe has the addition of a thicker section of material to give improved grip and traction. The heels are more upright and have a wider bearing surface, giving the hoof more support. All these features give polo ponies more confidence when playing at high speed. The Extra Sound Plus High Goal Polo shoe has easy to fit shapes for shoeing either hot or cold, and comes with a pre-drilled 3/8" stud hole in the hind shoe. Size 4 through 7, race plate sizing.



## July 2022 FPD Facebook 20+2 Giveaway Drawing

The Facebook Giveaway for July will be one each of Biophene Disinfectant Spray, Disinfectant Wipes and Hand Sanitizer for two winners and one Biophene Disinfectant Spray for 20 winners. Biophene Disinfectant Spray is ideal for hand tools and work surfaces.



Look for posts on FPD's facebook page to register for a chance to win the monthly free give-away. This giveaway is only valid in the U.S. and Canada.

**20+2**  
**GIVEAWAY**  
DRAWING

DEADLINE TO ENTER 7/31/22. No purchase necessary. 22 names will be drawn 8/1/22, only valid in the U.S. and Canada. FPD, Inc. and Diamond Farrier Co. Employees and Dealers not eligible to win.

**FPD**  
DISTRIBUTION  
july  
20 WINNERS RECEIVE  
(1) Biophene Disinfectant Spray  
PLUS PACKAGE  
2 WINNERS RECEIVE  
(1) Biophene Disinfectant Spray  
(1) Disinfectant Wipes  
(1) Hand Sanitizer

## JUST A REMINDER

### FootPro™ Wooden Shoes

The new FootPro™ Wooden Shoes are now available. These wooden shoes are typically used in treatment of chronic and sometimes acute laminitis cases. Sold in pairs and screws are provided. The FootPro™ Wooden Shoes are a complementary product to the 3D Hoofcare Hoofcast, as most wooden shoes or clog applications are done with a cast material to secure the shoe.



### FootPro DIM

FootPro DIM 20 and 40 impression materials are available from FPD dealers. The FootPro DIM 20 and 40 impression materials are available in 2 lb. and 4 lb. units.

If you are interested, check with your dealer or visit FPD's Dealer Locator at [www.farrierproducts.com/locations](http://www.farrierproducts.com/locations).



View recent videos of the DIM Impression Material on FPD's YouTube Page at [youtube.com/FarrierProducts](https://youtube.com/FarrierProducts).



## HISA Race Plate Rules Update

**The new rules for race plates allowed at Thoroughbred tracks in the U.S. now go into effect August 1, instead of the original date of July 1.**

HISA seemed willing, at one point in our discussion, to push the effective date out 90 days, but apparently other manufacturers of race plates convinced them it wouldn't be necessary, thus giving the market less time to make adjustments in inventory.

The HISA rule prohibits use of any race plate with a toe insert or other traction device that is higher than the ground surface of the shoe. Simply put, only flush toe shoes or a rim shoe that is no higher than 2mm. There are currently no rim shoes in the market that would be allowed. The XT, Low Toe, Regular Toe and Quarter Horse toe inserts are no longer allowed for Thoroughbreds.

Kerckhaert is already producing compliant styles and we will have inventory in July before the August effective date. Production is underway for the flush toe Tradition series, unclipped and clipped – as well as the Kings Plate, Fast Break and Legendary series.

Keep in mind, all current shoe styles are still acceptable for Quarter Horse racing and Standardbreds are still allowed to use shoes with toes and rim shoes that are higher than 2mm. The Thoroughbred rules do not apply to Canadian Thoroughbred tracks.

## Forging a Plain Stamped Shoe

AS SEEN  
ON FPD'S  
BLOG

Roy Bloom, APF CJF provided us with an opportunity to get some good step by step shots of him forging a plain stamped shoe using 5/16"x3/4" flat stock.

Notice that Roy, right-handed, works with his struck tools in line with his center-right side and is not trying to cross-over the shoe. This allows much more controlled use of the tools and allows you to strike the center of the tool in a balanced position.

You are likely to get better results in the shoe and also avoid damaging your tool with off balance impact.

You can see Roy talking about tool maintenance and forging in videos we have posted on our YouTube channel [youtube.com/farrierproducts](https://www.youtube.com/farrierproducts).



Start your toe bend working on the face or horn, making your first blow just off center.



Working with round side of hammer, establish first one side of bend then the other.



Keep stock in line and flat as you put toe in.

*Continued on next page*





Working on face and at opposite edge of anvil, form your heels and heel check.

You can eyeball it or use a Bloom t-square tool to mark your toe nail.



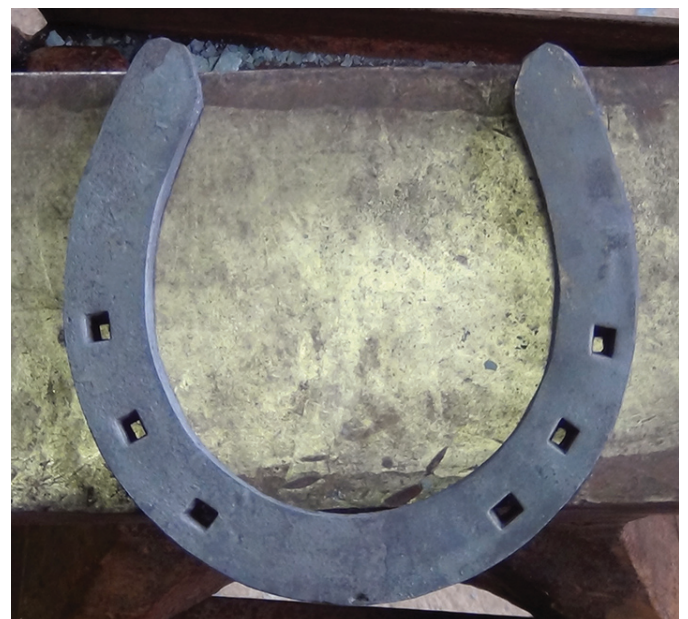
Turn branch over horn, striking the shoe just past the center of the horn to make the bend.

Use hammer to position forepunch to minimize heat build-up in tip. Establish your nail position and punch almost to finish depth.

Work branch to clean up frog eyes.



Forepunch to final depth, drift and pritchel.



After drifting and pritcheling, make your flattening run and any last adjustments to shape.